

# SYGIC PROFESSIONAL NAVIGATION WITH SDK

For easy integration into  
Fleet Management Systems



No internet connection needed.  
Maps are stored on the device.

---

Software Development Kit (SDK) available  
for Android, Windows and Linux.

---

Configurable for any large scale deployment.

---

60+ well documented APIs.

# SYGIC BUSINESS SOLUTIONS

## WE DEVELOP THE WORLD'S MOST INSTALLED AND MOST ADVANCED OFFLINE NAVIGATION APP.

Sygic Business Solutions focuses on developing Professional Navigation with SDK and other solutions for B2B customers in fields of transportation, logistics, parcel delivery, automotive, utilities, emergency and municipal services.

### 130 M +

consumer downloads.  
5 million added each month.

### 110 +

countries around the world.

### 1500 +

fleets.

### 250 K +

professional drivers are using  
Sygic Professional Navigation  
every day.

### #1

publisher on Google Play  
and iOS by Revenue in  
the Navigation category.

### 150

employees.

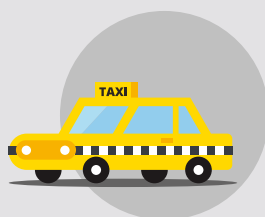


# ENHANCING EFFICIENCY ACROSS MULTIPLE INDUSTRIES



## LONG HAUL

Up to 10 % less km driven



## TAXI SERVICE

Millions of POIs



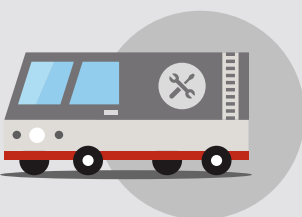
## EMERGENCY

Get to the incident faster



## DELIVERY

Optimized itinerary management



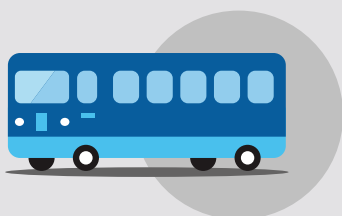
## FIELD WORK

Up to 20% increase in Productivity



## MUNICIPAL SERVICES

Save on New drivers training



## PUBLIC TRANSPORT

Arrive safely with guided routes



## OIL & MINING

Navigate on your own maps



## CONSTRUCTION

Find construction sites on time



### **Fleet Managers**

Sygic Professional Navigation can enhance the operational efficiency of your fleet with precise routing, a first class user experience and set of features specially designed for company fleets.



### **System Integrators**

Sygic Professional Navigation can add value to your fleet or transport management solution with minimum effort. SDK APIs, event call-backs and customizable configuration files help meet the specific requirements of various fleets.

**FIRST CLASS USER  
EXPERIENCE AND SET  
OF FEATURES SPECIALLY  
DESIGNED FOR  
COMPANY FLEETS**

# SOFTWARE PRODUCTS



## Truck Navigation

Using truck-specific routing that automatically avoids roads not suitable for trucks, buses or special cargoes.



## Fleet Navigation

For enhanced efficiency of delivery, field work or any other commercial fleets.



## Taxi Navigation

With special maps that contain taxi lanes and other features for better and faster service.



## Emergency Vehicles Navigation

Allowing vehicles with special permission to enter pedestrian zones and roads closed to regular vehicles.

# GLOBAL MAP COVERAGE AND REGULAR MAP UPDATES

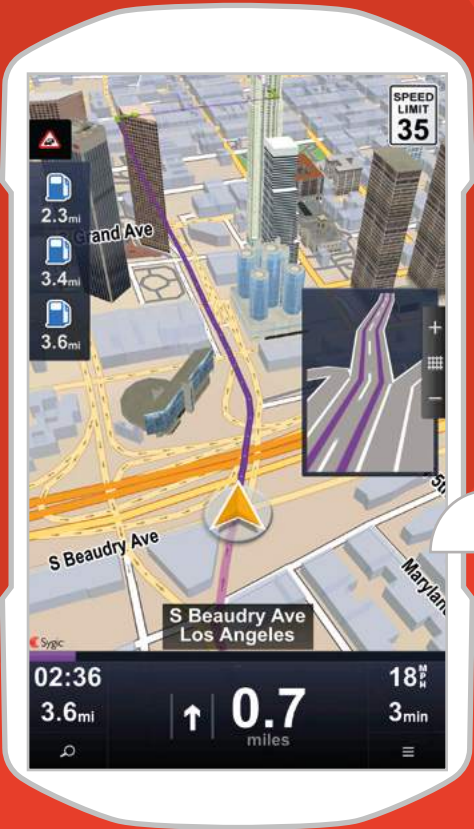
Sygic Professional Navigation maps cover almost all countries in the world using data from renowned global and local map providers or GIS systems.

The navigation has a built-in map downloader to provide always up-to-date maps over cellular or Wi-Fi networks. The map update can be triggered over the air using custom URL commands.

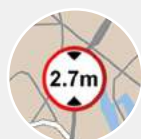
## OUR PARTNERS



OpenStreetMap



# AVAILABLE FEATURES



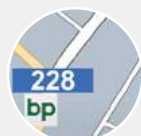
**Truck restricted roads**



**Truck restriction signs**



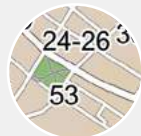
**Residential area**



**Industrial area**



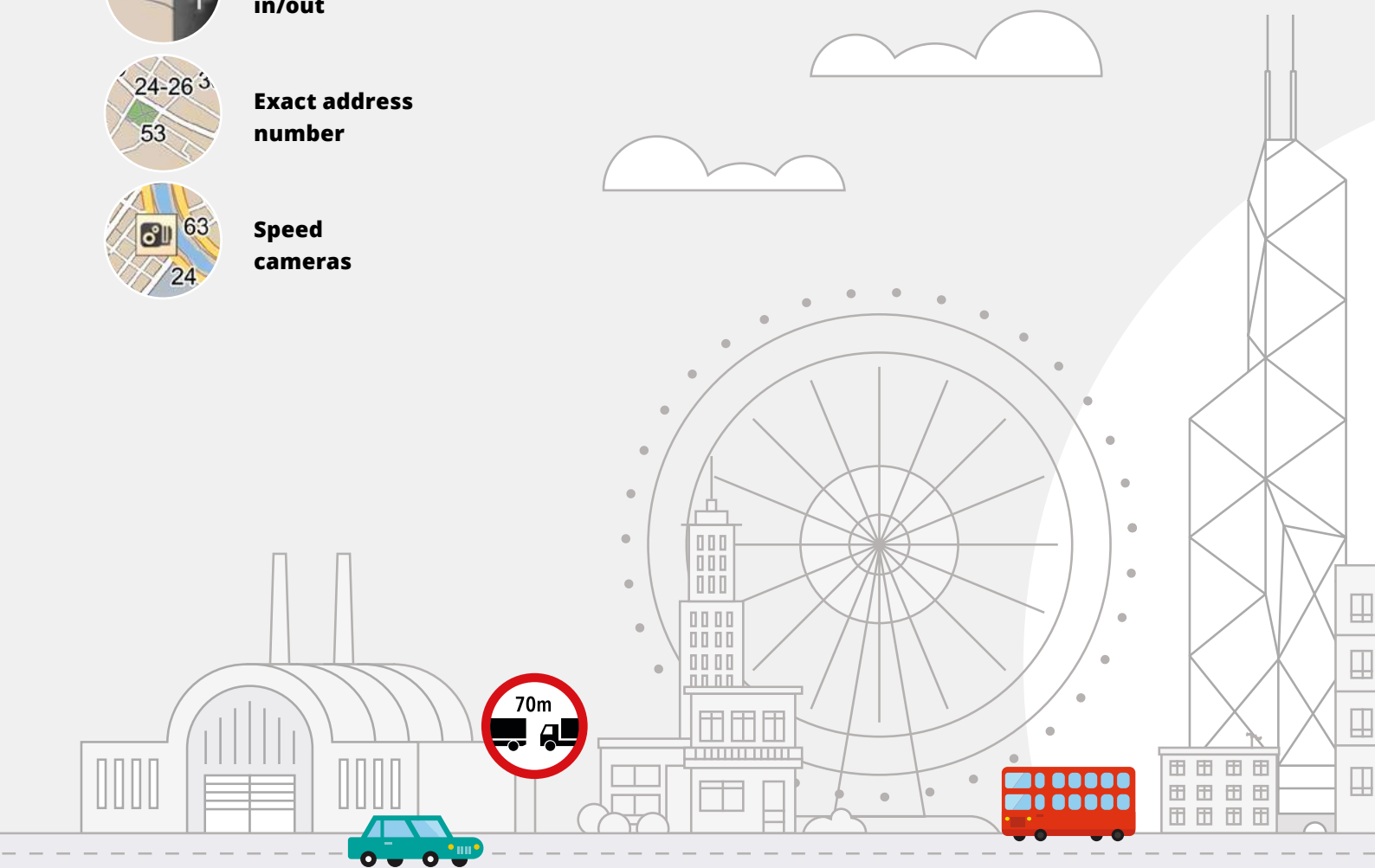
**Map zoom in/out**



**Exact address number**



**Speed cameras**

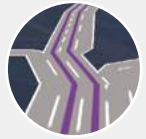




# GRAPHICS OPTIMIZED FOR TABLET & HD DISPLAY



**Lane  
assistant**



**Next  
maneuver**



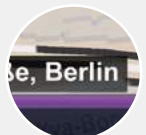
**Distance to next  
change of direction**



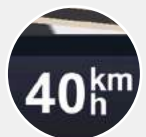
**POIs  
on route**



**Current  
road/street/city**



**Current  
speed**



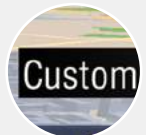
**Current  
speed limit**



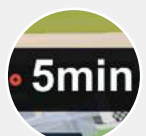
**Upcoming speed  
limit change**



**Custom  
defined alerts**



**Traffic  
information**



# NAVIGATION

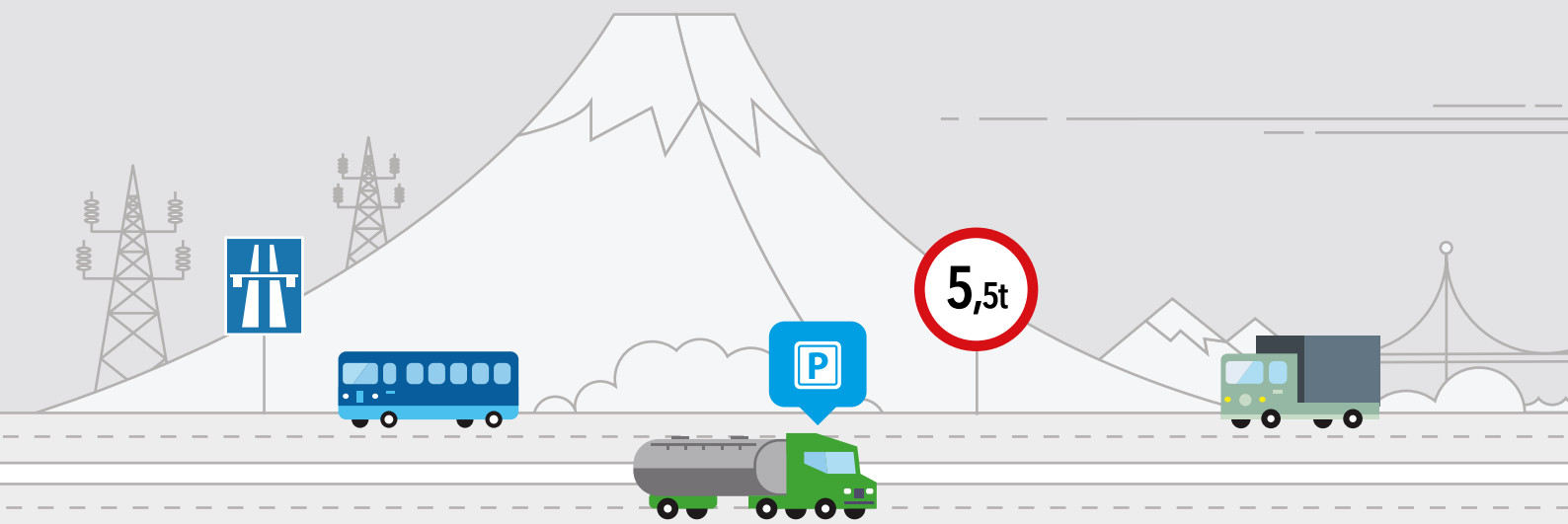
## AUTOMATICALLY AVOIDS ALL ROADS UNSUITABLE FOR TRUCKS OR SPECIAL CARGOES

### Turn-by-turn voice instructions and automatic rerouting

Timely turn indicators with the precise distance to each maneuver will guide you to your destination. If you miss a turn, our smart algorithm will immediately recalculate to get you back on your way.

### Spoken Street Names - TTS

Sygic Professional Navigation provides voice instructions using TTS technology, including street names, so the driver's eyes never have to leave the road.



### Truck attributes

Automatically avoids all roads unsuitable for trucks, special cargoes, or hazardous materials by setting the vehicle's parameters and truck-related attributes.

### Guided routes

The guided routes feature converts any geometry into a navigational route, which can be enhanced with additional instructions for drivers.

Pre-planned routes from any source (optimization systems, planning tools) can be pushed directly into the navigation.

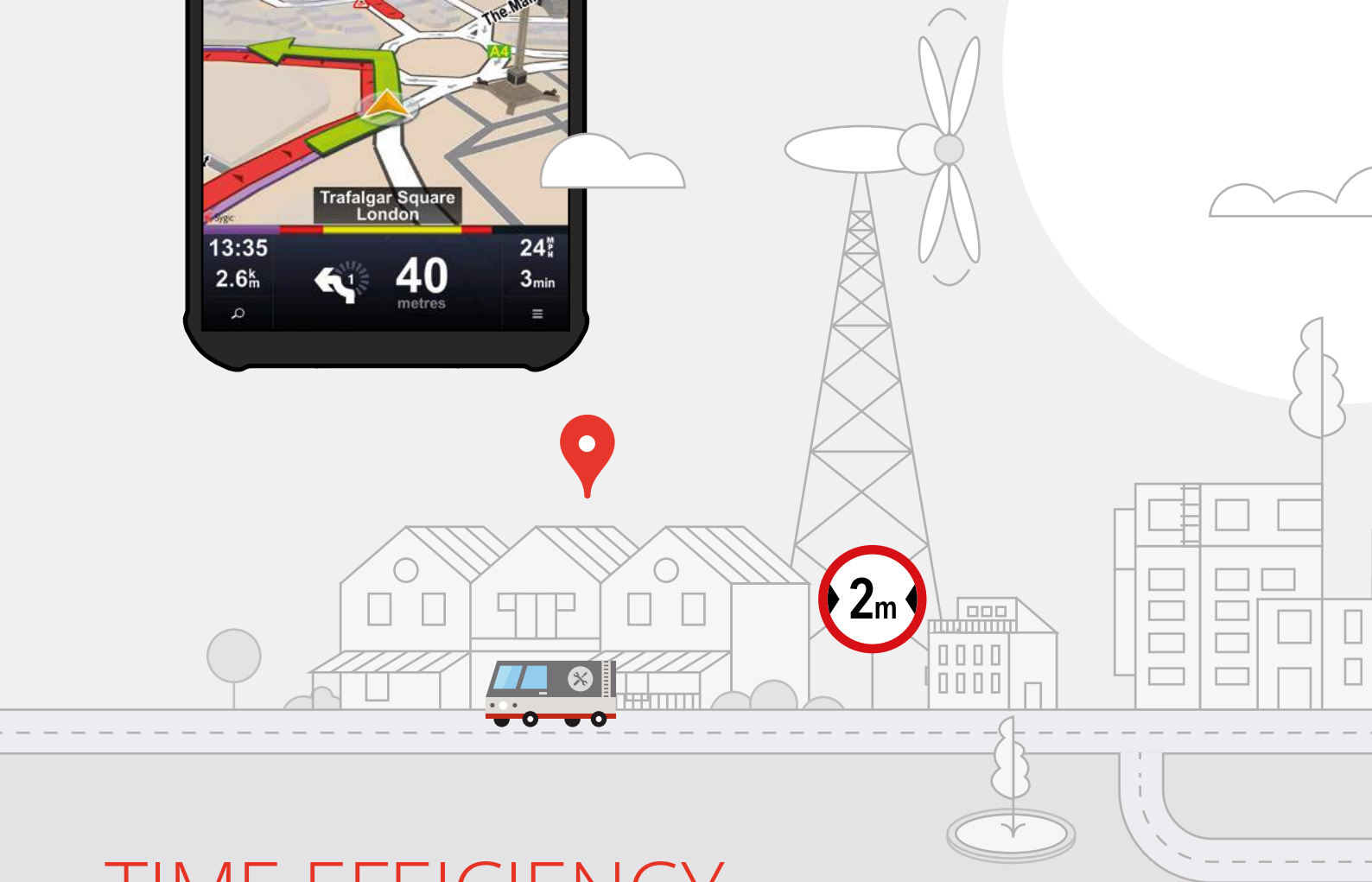
### Avoid toll roads on part or on entire route, avoid motorways

Calculates routes taking into consideration toll costs.





**UP TO 10 %  
REDUCTION  
IN DISTANCES  
DRIVEN**



## TIME EFFICIENCY

### **Most accurate Estimated Time of Arrival (ETA)**

The calculation of the arrival time is based on historical data measurements of traffic intensity for different times of day, which makes the ETA highly accurate.

### **Time domains for delivery**

Sygic Professional Navigation will guide the driver to the delivery location within the allowed time period.

In the event that the delivery zone is not accessible to vehicles, the navigation will suggest the closest reachable destination.

### **Real time traffic information**

Real-time warnings about traffic jams and the duration of the delay are provided.

These help the driver to avoid delays on the route, save fuel and have exact ETAs for time-critical assignments.





### Most powerful Cloud-based Route Optimization

The fastest and most effective route optimization for an unlimited number of waypoints accessible directly from Sygic Navigation.

Sygic Professional Navigation route optimization promises up to 10 % reduction in distances driven.

### Itineraries with Time Windows

Easy management of routes with multiple waypoints, where each waypoint can have a predefined time window and a stop time.

The improved route summary window displays the list of waypoints with provided time windows, stop times, ETA information to each waypoint and alerts in case of delays.

# DRIVING SAFETY

## Speed cameras database

If the driver exceeds the speed limit while approaching a fixed speed camera, Sygic Professional Navigation alerts the driver and indicates the speed limit.

The feature is also available in online mode, where it constantly updates the driver about new mobile camera locations and warns him whenever a new speed trap appears on the route.

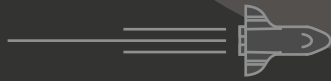
## Preferred right turn

The preferred right turn (*left in countries and territories with left-hand traffic*) functionality of the Sygic Professional Navigation routing algorithm suggests routes that avoid time-consuming and dangerous left turns at intersections against incoming traffic.

## Reach the destination on the right side of the road

When specifying a house number while inputting a destination, the navigation can calculate the route in order to allow the driver to reach the destination on the right side of the road.





### HUD interface

Allows vehicle hardware producers to bring the navigation interface into the driver's line of sight by linking directly with the navigation functions, and projecting the route information onto a built-in screen on the dashboard or other display systems.

### Screensaver

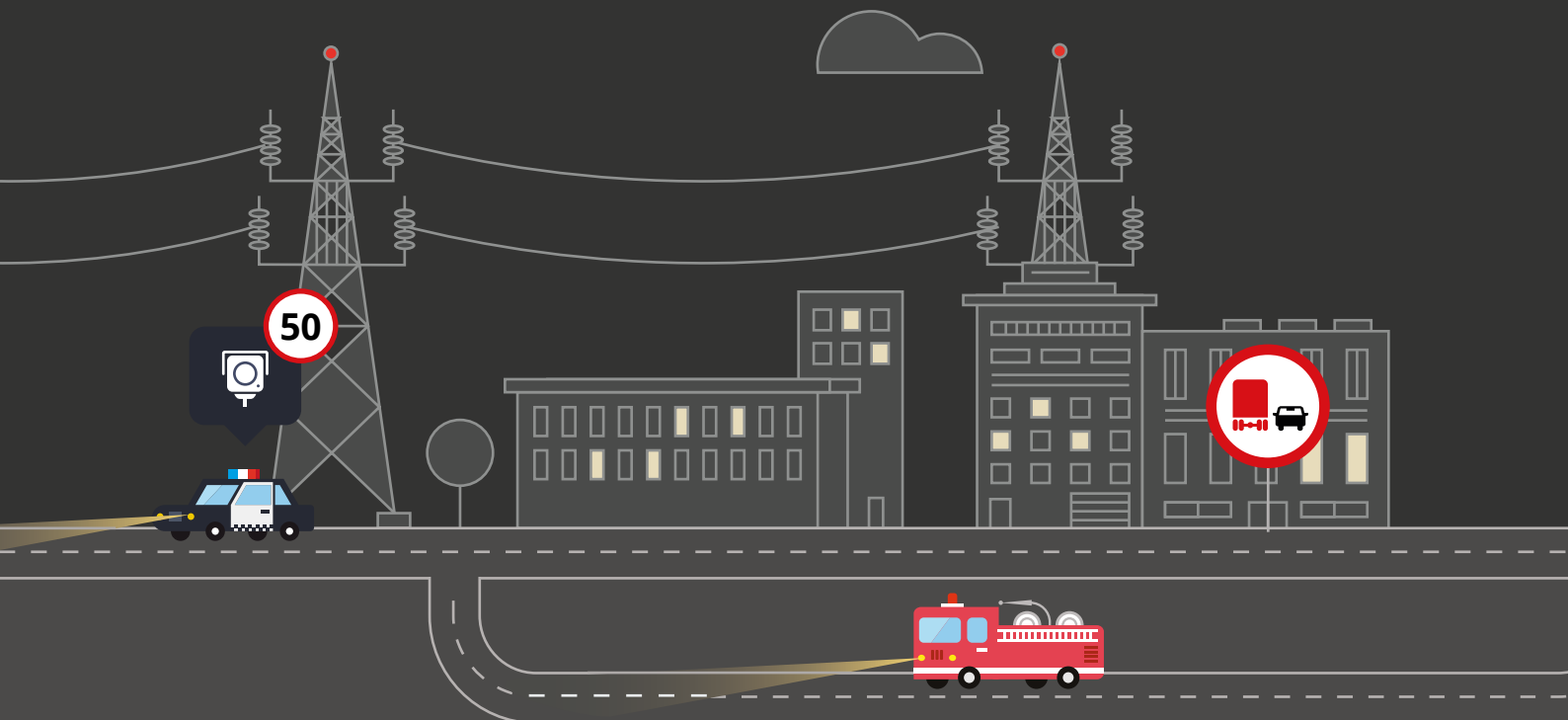
Enables a screensaver mode that turns off the navigation screen on highways to reduce battery drain. The navigation screen reappears 5 km before the next turn or can be reactivated by simple tap on the screen.

### Night mode

When driving at night, Sygic Professional Navigation Night mode turns on automatically to preserve night vision while driving.



PREFERRED RIGHT TURN



# GEO FEATURES

## Geofences

Allows areas on a map (*geofence polygons*) to be highlighted and to track vehicles and assets present in this area.

The navigation notifies the driver and the dispatcher in real time if the driver crosses the border and about his presence inside the geofence.

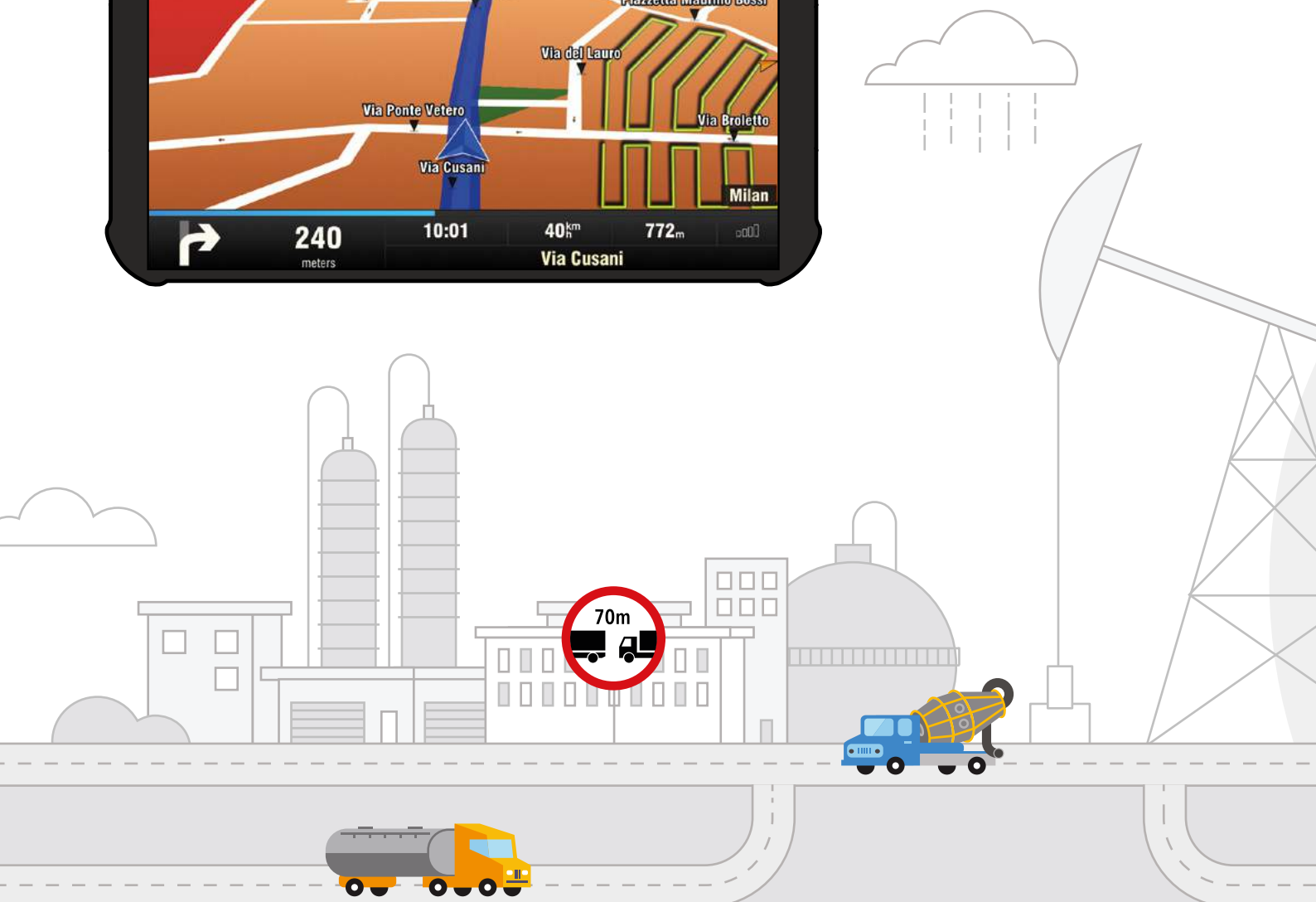
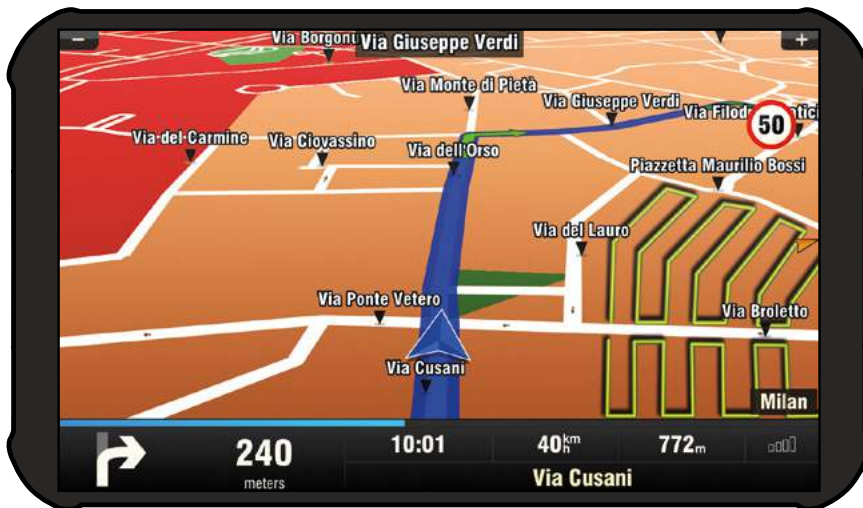
## Custom map overlays

Visualize various GIS layers (e.g. *infrastructure lines, pipe network, or unmapped roads, etc.*) on the Sygic Navigation map using the custom geometry files.

## Map conflation

Companies, which need to navigate their drivers on roads not mapped on standard maps, such as private or lease roads, can import their map content onto Sygic Professional Navigation.

Conflated maps can provide customers with voice-guided navigation from the city directly to assets on your own roads like oil wells.





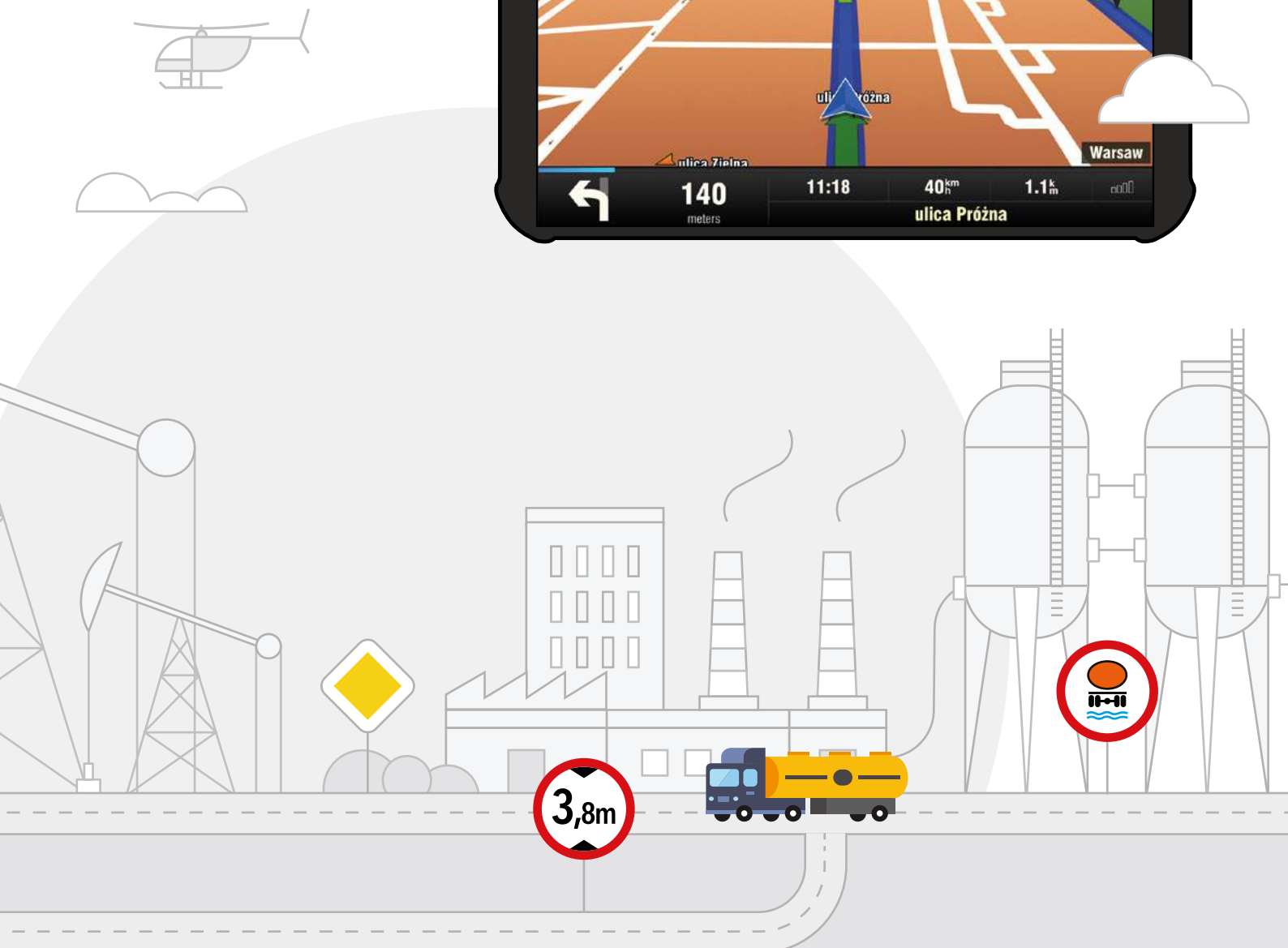
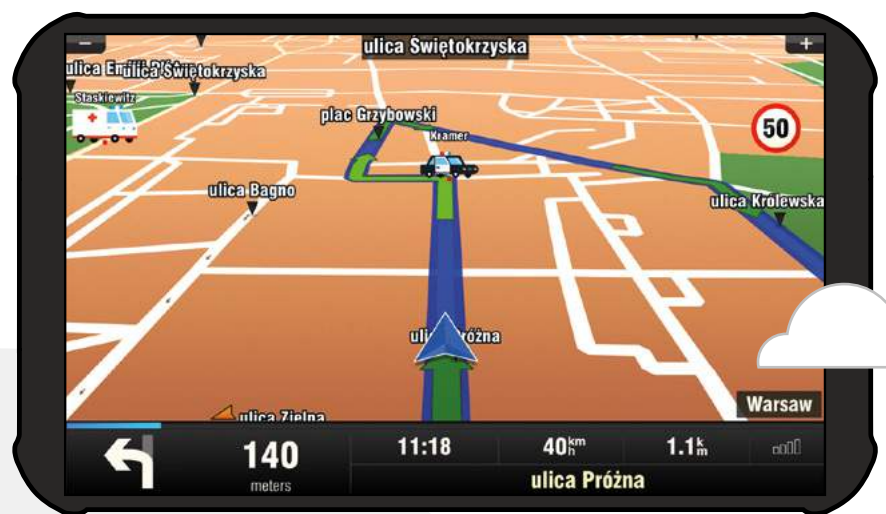
**Import custom POIs**

Add custom points of interest (POIs) to the navigation maps. You can very easily find the nearest POI from your current position and get navigated to this waypoint.

**Workmates**

Fleets that need mutual visibility of vehicles can share the position of other co-workers directly on the navigation screen while navigating.

# YOU CAN IMPORT YOUR MAP CONTENT ONTO SYGIC PROFESSIONAL NAVIGATION



# SOFTWARE DEVELOPMENT KIT (SDK)

SDK is a comprehensive and well-documented set of API functions for easy integration of Sygic Professional Navigation into any fleet and workforce mobility solution.

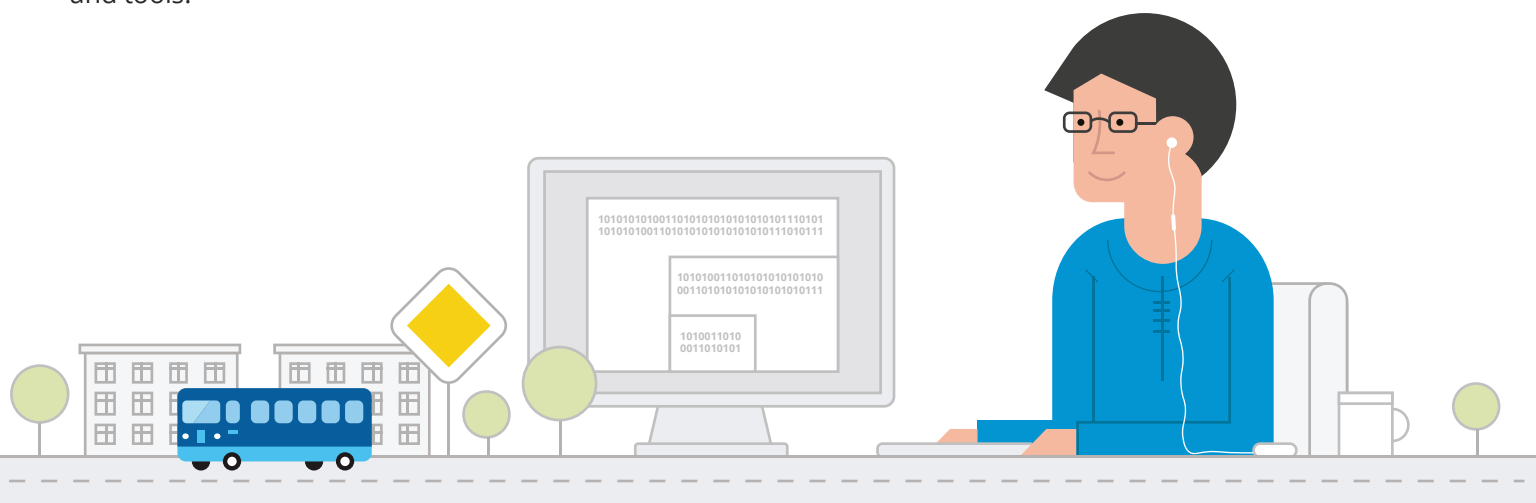
Over 60 easy-to-use API functions allow flexible customization to help integrators and solution providers to meet the needs of different fleets.

## Functionality the API offers

- Navigate by destination or by itinerary
- Add user-defined content to existing maps
- Use stand-alone or plug-in Sygic Professional Navigation
- Monitor driver and route status by accessing information from navigation
- Remotely install, manage and control the navigation
- Text-to-speech converted messages sent from enterprise servers to drivers
- Communicate with drivers directly via the navigation

Sygic navigation for fleets can be easily installed on any personal navigation device, MFD or in-dash hardware.

Sygic SDK allows development in different programming languages and tools.



# INTEGRATION

## Stand-alone

The navigation may run as separate application, but it is fully controlled by integrators' application. As needed, the navigation screen can be "hidden" by the application (*allowing the driver to access other instructions as he reaches his destination*) or brought on top (*to navigate the driver to the next waypoint*).

This method benefits from full online functionality, including automatic activation and updates.

## Plug in

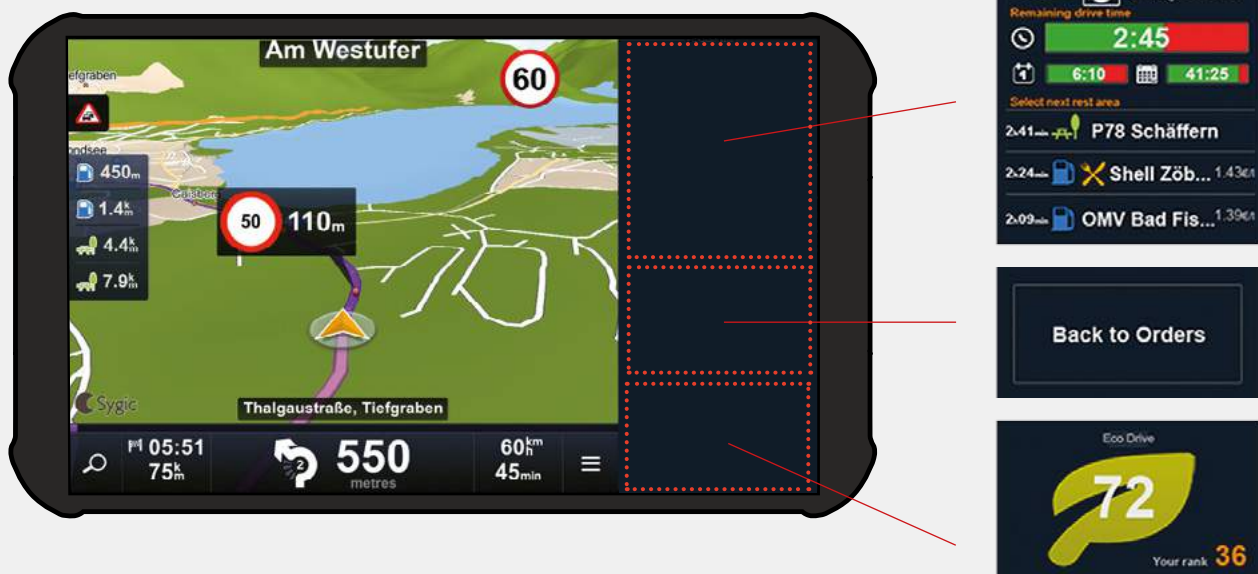
In complex systems, where it is required, the navigation can be a part of integrators' application, taking only a portion of the screen. With this method the integrator covers the activation and application management.

Sygic Professional Navigation may run in embedded mode inside an application both in Windows and Android operating systems.

## Sidebar with widgets

Sidebar represents a hybrid way of integration where integrators' application is embedded inside navigation screen and is designed by means of configurable set of widgets and call-backs (*to display information about driving time, driving behavior, information about tasks to perform*).

## Sidebar with widgets



# CUSTOMIZATIONS AND SUPPORT

Our business partners and clients can manage licenses and submit requests to technical support through our dedicated web portal, **Sygit Business Partner Portal**.

It offers loads of valuable content like a knowledge base, documentation, technical documentation and more.

Sygit provides professional **technical support** to developers and software vendors integrating the navigation using our SDK. Resources for developers can be also found online on developers' page: [developers.sygit.com](https://developers.sygit.com)

Bigger projects may require functionality that is not part of the standard Sygit Professional Navigation.

Please contact our professional technical support team to discuss your **on-demand customization** requirements, and we are sure our highly skilled developers will provide you with a high quality solution to meet your very specific needs and standards.



SAN FRANCISCO



NEW YORK



ABU DHABI



HONG KONG



# TECHNICAL SPECIFICATIONS

## HARDWARE COMPATIBILITY

	2D version	3D version
<b>Device memory</b>	min 128 MB memory	min 512 MB memory
<b>Storage</b>	map stored on SD card or internal memory	map stored on SD card or internal memory
<b>Supported processors</b>	min 600 MHz	min 1GHz
<b>3D chip</b>	not required	required
<b>Screen resolution</b>	min 240x240	min 480x320
<b>Supported platforms</b>	Android, Windows CE, Windows Mobile, Windows XP, 7, 8.1, 10, Linux	Android, Windows CE, Windows XP, 7, 8.1, 10, iOS

## AVAILABLE LANGUAGES

European		Middle Eastern	Asian
Bulgarian	Lithuanian	Arabic	Azerbaijani
Catalan	Norwegian	Farsi	Hindi
Croatian	Polish	Hebrew	Chinese
Czech	Portuguese		Chinese Traditional (HKG)
Danish	Portuguese (Brazil)		Chinese Traditional (TWN)
Dutch	Romanian		Indonesian
English	Russian		Kazakh
Estonian	Serbian		Kurdish
Finish	Slovak		Malay (Bahasa)
French	Slovene		Thai
German	Spanish		Urdu
Greek	Swedish		Vietnamese
Hungarian	Turkish		
Italian	Ukrainian		
Latvian			

## INTEGRATING PARTNERS

---



## OEM PARTNERS

---



## USERS

---





## CONTACTS

### **Sygic Headquarters**

Karadžičova 14  
821 08 Bratislava  
Slovak Republic

### **Sygic U.S. Office**

28 2nd street  
San Francisco, CA 941 05  
ph. +1 (415) 515-5057

### **Sygic Sales Agency (China)**

Rm 1501, 2-2 Tian Yu Xiang Shan  
Futian District, Shenzhen 518000  
Ph. +86-13902958292