

User Manual



TISPLUS Vehicle Cradle for Zebra TC7x Series

Mounting Information

- The cradle can be mounted with four 4mm countersunk screws. The screw holes are compatible for RAM Mounts Round Base (RAM-B-202U).
- It is recommended to mount the TISPLUS Cradle at a position that does not interfere the normal driving function.
- Choose a mounting position that protects the cradle from direct sunlight and heat. The TC7x's battery is no longer charged at battery temperatures > 40 ° C.
- Do not bend or damage the Power/USB cable.
- The installation of the cable shall not affect the steering and brakes.
- For charging connect cigarette lighter plug/adaptor to the vehicle power. For Cradle with USB cable, connect the cable to USB-A cigarette lighter 12/24V adapter or similar USB power supply with a recommended power of at least 2A.



Cradle Types

with USB-cable

with cigarette lighter plug

with open cable ends



	Part Number	Type
1	23-7x-09-TPC-04 (Standard)	TISPLUS Cradle with fix mounted USB cable and USB-A cigarette lighter 12/24V adapter
2	23-7x-09-TPC-01	with integrated 12/24V power supply and cable with cigarette lighter plug
3	23-7x-09-TPC-02	with integrated 12/24V power supply and cable with open ends

Install cable with open ends (only 23-7x-09-TPC-02)

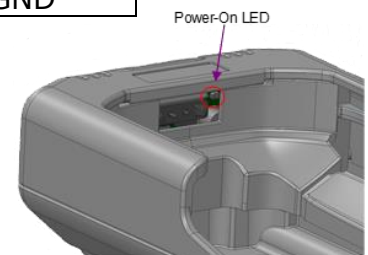
- The fixed installation to the on-board power should only be done by a qualified person!
- Make sure that the power supply of TISPLUS cradle is secured by a fuse and could be switched off via the ignition or a separate switch.
- Make sure that the ignition is turned off and the vehicle battery is disconnected before and during installation.
- Make sure that cables, fuel lines, brake lines and the vehicle's safety equipment are not damaged during installation.
- Make sure that the function of the airbag is not interfered by the installation.
- Connect the brown cable to a voltage of 9-30V and the blue cable to GND. Using a different voltage or polarity can destroy the electronics.



• brown	• blue
+9V .. +30V	• GND

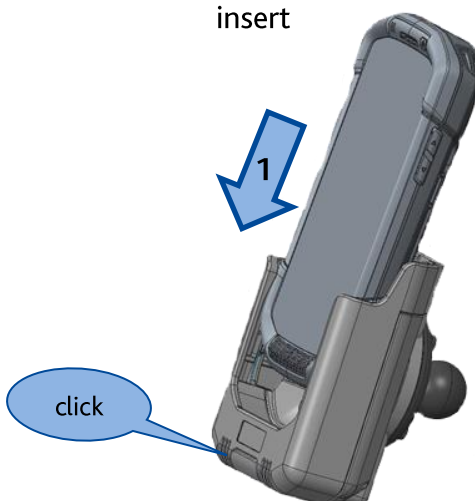
Power-On-LED

A power LED indicates proper USB power supply, the LED is visible when the device is removed.



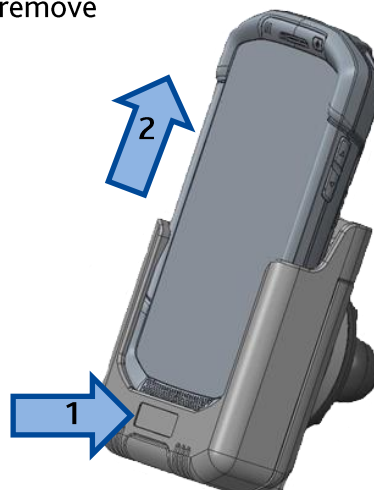
Handling

insert



Insert the device into the cradle (1) and let it click into place with slight pressure downwards.

remove



Press the button (1), then remove the device (2) by pulling it upwards.

Maintenance and Care

- Do not use oil to lubricate the mechanism. Oil detracts plasticizers from the material, the plastic parts become brittle.
- Do not use harsh chemicals, cleaning solvents or strong detergents to clean the Cradle.
- Clean the Cradle with a damp cloth.
- Liquids containing acid or sugar that get into the cradle can lead to malfunctions. In that case it is recommend to replace the cradle.

Technical Data

DIMENSIONS/WEIGHT

- 109x92x57mm
- 210g (without device and RAM mount)

CONNECTION / INPUT- OUTPUT VOLTAGE

- 23-7x-09-TPC-04 appr. 1,4m cable with USB-A plug, Input 5V DC and USB
Vehicle charging adapter
Input: 12/24V DC (9-30V DC), Output: 5V 2x 2.4A
- 23-7x-09-TPC-01 appr. 1,4m cable with cigarette lighter plug
Input: 12V/24V DC (9V...30V DC), Output: 5,4V DC, max. 3A
- 23-7x-09-TPC-02 appr. 1,4m cable with open ends
Input: 12V/24V DC (9V...30V DC), Output: 5,4V DC, max. 3A

APPLICATION AREA

- Operating temperature: -20 °C to + 70 °C
- Storage temperature: -40 °C to +85 °C

APPROVAL

- E1 ECE-Approval No. 10 R-057882
(only for 23-7x-09-TPC-01 and 23-7x-09-TPC-02)